

A Tour of the New Business Add-Ins (BADIs)

Below is a snippet from one of hundreds of articles available to ERPtips subscribers.

If you would like a complimentary copy of the full article, please email

Mark.Downs@ERPtips.com

(include the title of the article in your email)

To subscribe to ERPtips, go to

www.ERPtips.com/Subscribe.asp

ERPtips Journal is published by Klee Associates, Inc.

ERPtips University provides both public and onsite training for SAP clients.

For more about ERPtips University, including the current schedule, click here:

www.ERPtips.com/WorkshopSchedule.asp

A Tour of the New Business Add-Ins (BADIs)

Pssst...wanna check out something HOT in SAP? Take a look at the newly enhanced BADIs available i

Click here to read this Snippet

Therefore, the call of the method of a single-use BAdI functions like a method call.

Multiple-use BAdIs operate very differently. Multiple-use BAdIs are suitable for various activities that might even be conducted in different ways, in different implementations, during the execution of a program. There may be different active implementations that can coexist simultaneously, but it is also possible that no active implementation might be present. The call of a method pertaining to a BAdI of this type may be similar to sending a message. The developer of the BAdI simply does not care how many sets of code are executed.

Creating a New Business Add-In

In order to better understand the structure of a BAdI, let us consider a simple example of creating a new BAdI. For simplicity's sake, we define a Single-Use BAdI. The steps needed are shown here:

Step 1 – Creating an Enhancement Spot

As already mentioned, the new BAdIs reside within an Enhancement Spot. In this step, we create the Enhancement Spot. Call the transaction SE18. The screen shown in Figure 2 appears.

Enter a suitable name for the Enhancement Spot in the field provided, and click the Create button. The dialog box appears, as shown in Figure 3.

Enter a description in the Short Text field and press Enter. The maintenance

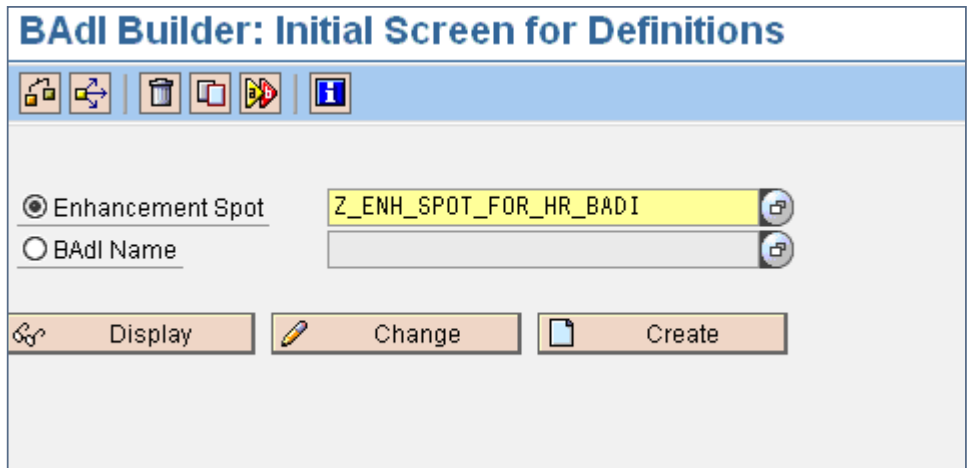


Figure 2: Initial Screen of the BAdI Builder Transaction

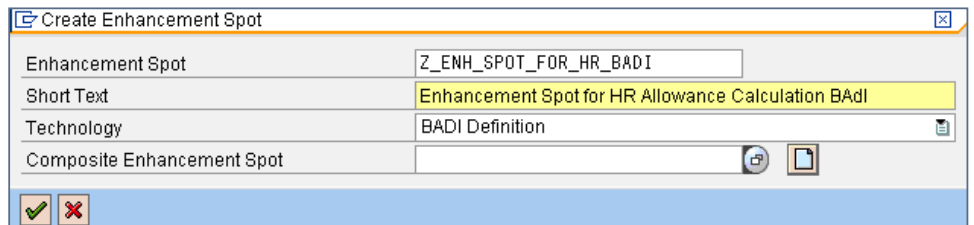


Figure 3: Creating the Enhancement Spot

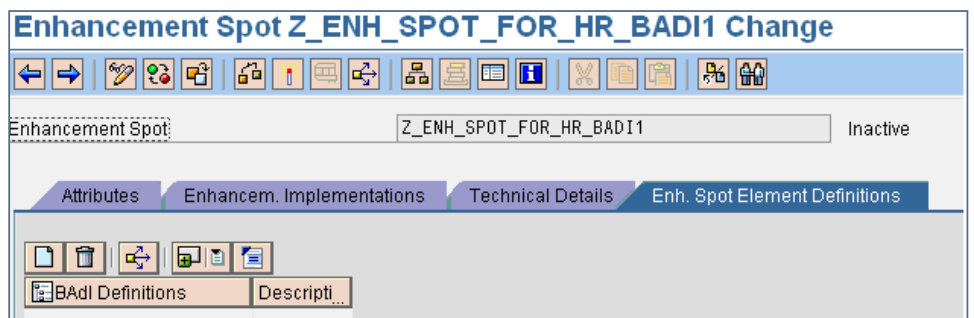


Figure 4: Enhancement Spot Maintenance Screen

screen for the Enhancement Spot then appears, as shown in Figure 4.

Step 2 – Creating the BAdI Definition

Click the Create button on the left. The dialog box appears, as shown in Figure 5.

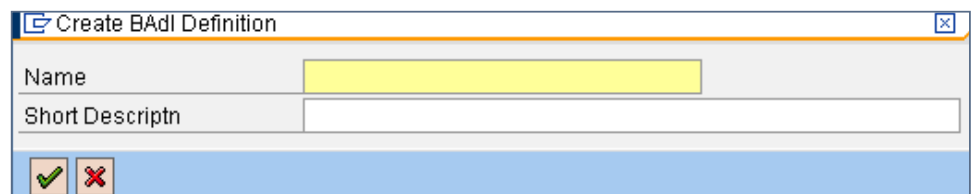



Figure 5: Creating the BAdI Definition

Enter a suitable name and description of the Business Add-in, and press Enter. This leads you to the screen shown in Figure 6.

In case you need to create a Multiple-Use BAdI, make sure the Multiple-use check-box is “on”.

Step 3 – Creating the Interface (and Methods) of the BAdI

This is an important step. We need to create the interface in which the methods will reside. In order to create the BAdI interface, click the  icon shown in the left pane of the screen in Figure 6 (this is before the BAdI name).

The tree opens, as shown in Figure 7.

Double-click the Interface node. The right pane of the screen changes, as shown Figure 8.

Enter a suitable name for the interface in the field provided, and press Enter. A dialog box appears prompting you for the creation of the interface name you have specified (see Figure 9).

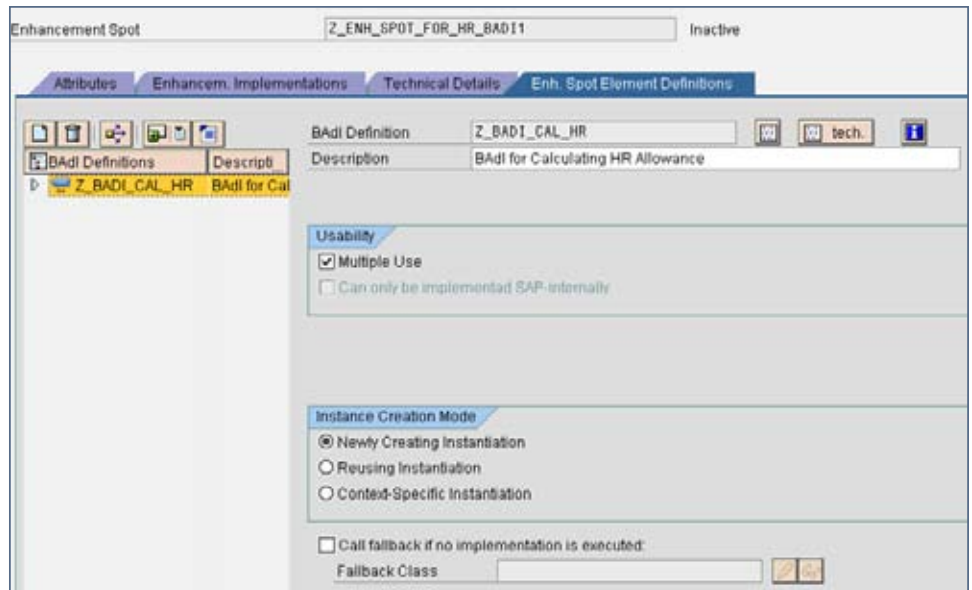


Figure 6: BAdI Definition Screen

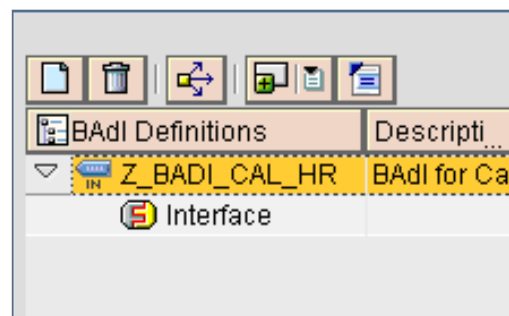


Figure 7: BAdI Interface Creation

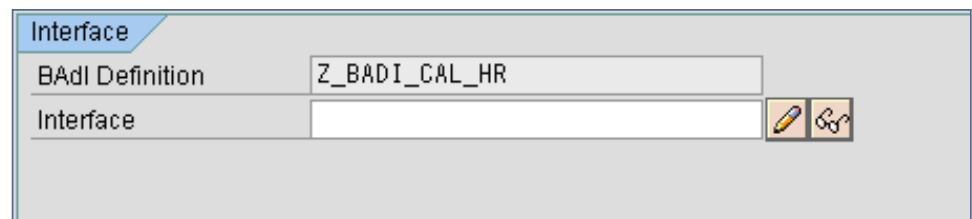


Figure 8: BAdI Interface Screen

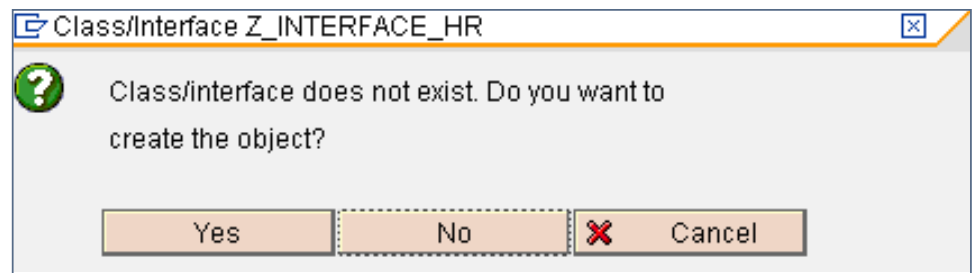


Figure 9: Creating an Interface Name