

The SAP Web Dispatcher: What It Is, and How It Is Installed

Below is a snippet from one of hundreds of articles available to ERPtips subscribers.

If you would like a complimentary copy of the full article, please email

Mark.Downs@ERPtips.com

(include the title of the article in your email)

To subscribe to ERPtips, go to

www.ERPtips.com/Subscribe.asp

ERPtips Journal is published by Klee Associates, Inc.

ERPtips University provides both public and onsite training for SAP clients.

For more about ERPtips University, including the current schedule, click here:

www.ERPtips.com/WorkshopSchedule.asp

The SAP Web Dispatcher: What It Is, and How It Is Installed

As the economy slows and jobs are lost, the crime rate always rises. These times, more than ever, call for heightened security measures to protect your firm's assets. This may be the time to consider installing SAP Web Dispatcher, to add a layer of protection to your web servers. Eric Walter explains the pros and cons of Web Dispatcher, as well as installation (implementation) steps in this article. Act prudently. Be safe.

Click here to read this Snippet

will create this user that will have access to manage the ICM and Web Dispatcher interface. This step is shown in Figure 3.

Once you enter your webadm password, you will be prompted for the kernel DVD. This article was written

using NetWeaver 7.0 SR3, and this version contains a bug when installing the kernel portion (due to the label that the sapinst program is looking for during the prerequisite checks). The label contents of the DVD are for Unicode; however, the label it tries to find is a non-Unicode label. To overcome this error, simply change

the contents of the label to one that is described in the message. This file is called LABEL.ASC and is in the kernel directory of the DVD. The bug is shown in Figure 4. You can copy the LABEL.ASC file to LABEL.ASC.org by simply renaming the file in explorer or using the cp command in UNIX, and then alter the LABEL.ASC accordingly using notepad or vi.

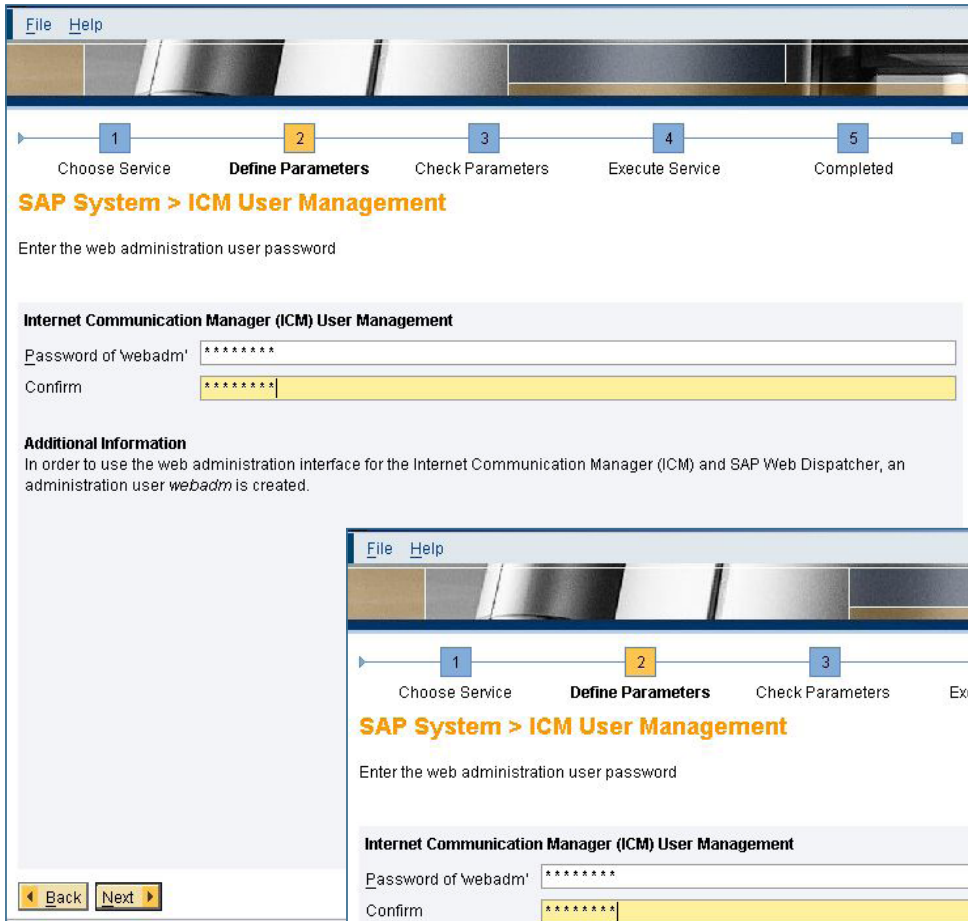


Figure 3: Creation of the ICM/Web Dispatcher Interface Management User Webadm

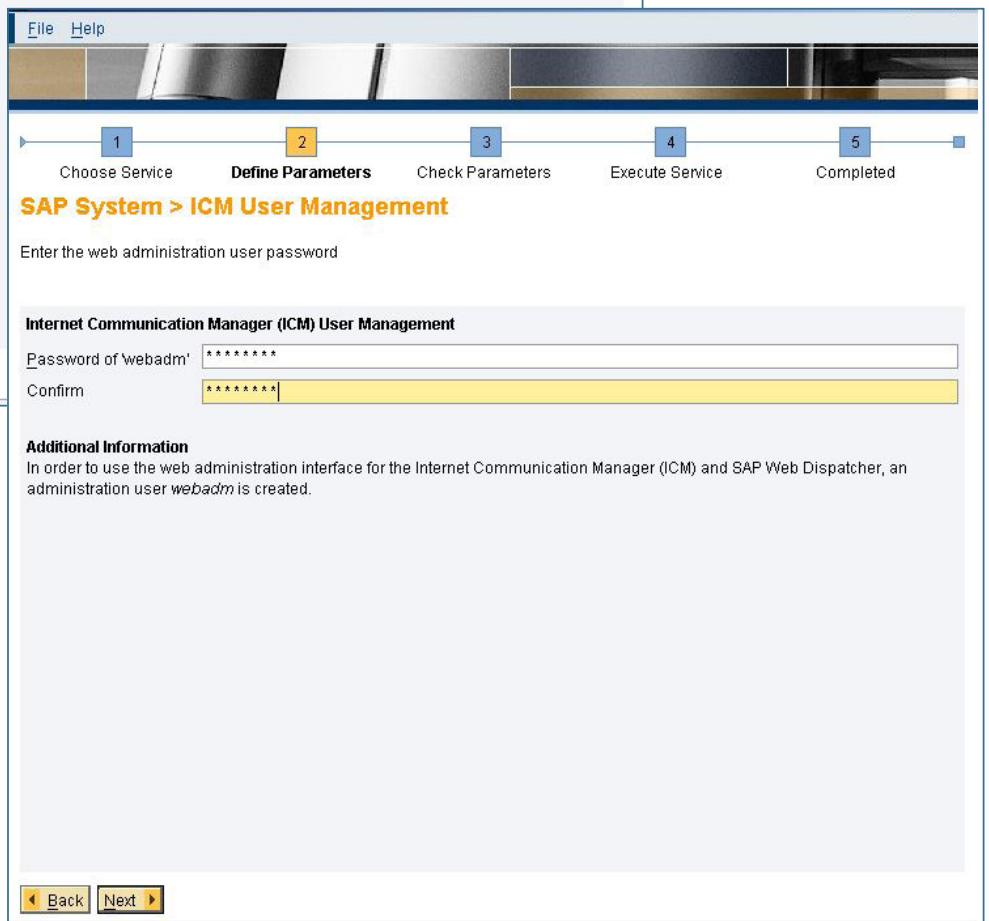


Figure 4: Error in the Sapinst Program for Web Dispatcher

Once you get past this point, Sapinst will run, and install all of the Web Dispatcher components.

Configuration

Now that you have successfully completed the Web Dispatcher installation, it is now time to configure it, using the Web Dispatcher Monitor utility. To access this utility, you must use a web browser with the address: <http://<webDispatcherHost>:<WebDispatcherPort>/sap/admin>

Enter the user ID “webadm”, with the webadm password you entered during the installation. You will now see the monitor screen, as shown in Figure 5.

You will notice that this seems to be a Display mode tool. You can change this to Maintenance mode, however, by right-clicking on the “running” text triangle, which is next to the green stop light, and choosing Enter maintenance mode from the drop-down. This is shown in Figure 6.

Once you have put this in Maintenance mode, you can make changes to the system parameters. You can also edit the profile entries for the Web Dispatcher by modifying the profile files, which are found in: **C:\usr\sap\<SID>\SYS\profile**. There are many profile parameters that are updated in this file.

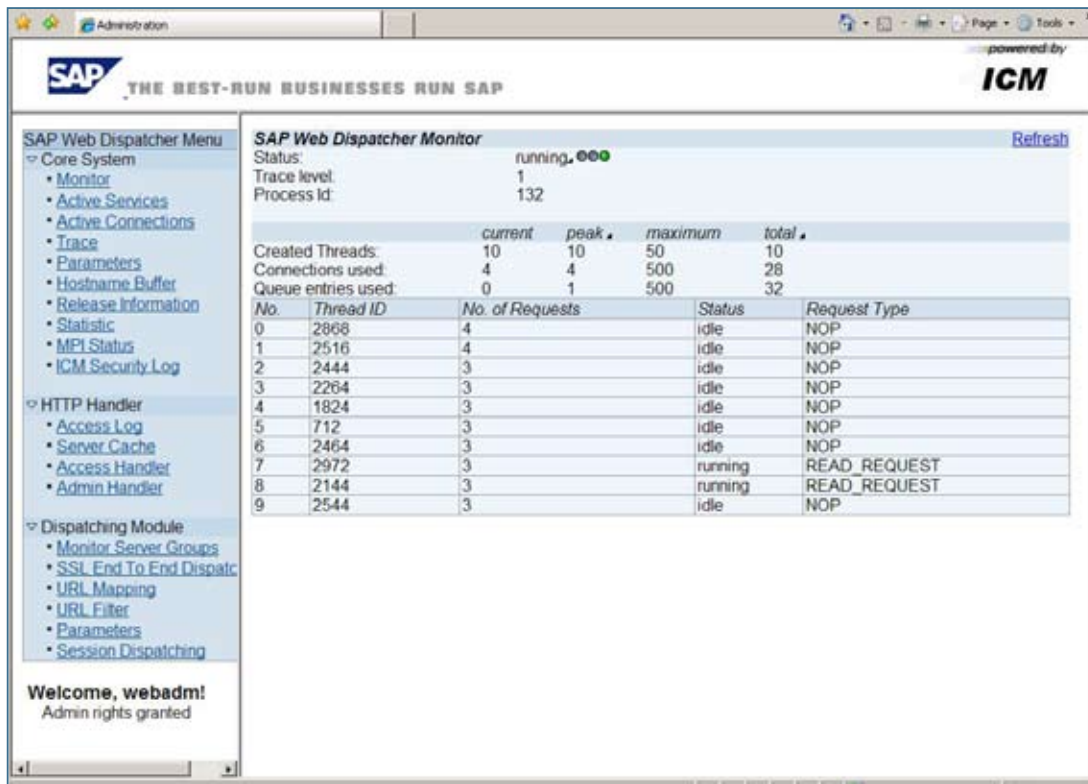


Figure 5: Web Dispatcher Monitor

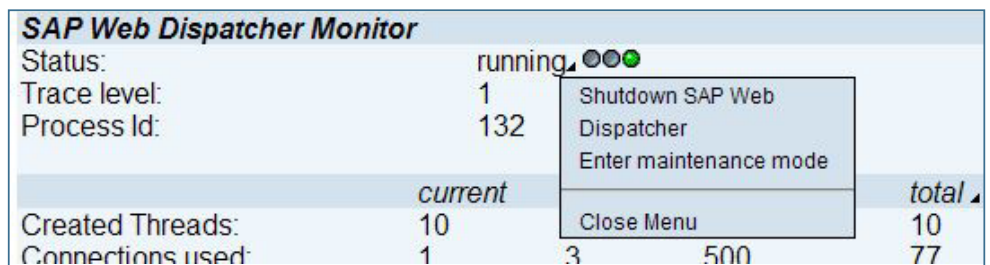


Figure 6: Right Starting and Stopping the Web Dispatcher